

INNOVATION

COLLECTION 2016

LEICHT[®]

CONTENTS

05	INTRODUCTION
06	CLASSIC-FS TOPOS CONCRETE-C
07	BONDI TOPOS
08	PROGRAMMES
10	NEW COLOURS AND DECORS
12	WORKTOPS
13	SINKS AND TAPS
14	L3 PULLOUT AND DRAWER SYSTEM
16	L-BOX
18	INTERIOR STYLE
19	UNITS
20	REAR PANELS WITH A MOTIF
22	ACCESSORY SOURROUND
23	DYNAMIC WHITE
24	LIGHTING AND ACCESSORIES
25	HANDLES

INTRODUCTION

Innovations 2016 in the LEICHT | WORLD in Waldstetten and at house4kitchen in Löhne

The LEICHT | WORLD in Waldstetten – a special place at which all the facets of the LEICHT brand are visible and palpable. Timeless and harmonious in design, elegant in terms of architecture and interior design, functional in concept as a combined showroom and training centre. A meeting point for kitchen dealers, architects, planners and visitors from all over the world. An attraction every year and the perfect backdrop for the showcasing of the brand's innovations.

In-house exhibitions 2015:

house4kitchen: 19 – 25 September 2015

LEICHT | WORLD: 2 – 4 October 2015. And at any time after that on appointment.



CLASSIC-FS | TOPOS | CONCRETE-C

Pure elegance: CONCRETE in white

With its timeless appearance, the CONCRETE front launched by LEICHT in the autumn of 2014 has become a genuine success model – particularly for customers who are looking for exclusive materials and want a kitchen to show individuality. With „dakar“, we are now presenting a new variety and exclusive further development of CONCRETE: concrete in white. An unusual combination which opens up a range of new perspectives for this timeless material. And a colour that makes the material ideal for an even wider use in kitchens. Because white is still the most popular colour here.

The overall effect of the „dakar“ kitchen shown here is light, friendly and homely. This is due to the open planning and wooden elements used. But particularly due to the off-white tone of the fine concrete with its textured surface obtained with manual trowelling. The light refracts differently on smooth and rough surfaces and thus conjures up a vital surface that always looks different. The change of material in the wall unit and niche area to TOPOS in „textured natural oak“ underlines the horizontal and at the same time supports the naturally homely atmosphere.

New niche shelving shown here in matt-basalt grey lacquer combined with a rear panel in „textured natural oak“ adorns the wall under the windows. The illuminated shelving elements can be set up individually and here were situated to suit the arrangement of the floor units. The small compartments of the shelving break up the otherwise strict kitchen architecture and thus once again focus on the area above the worktop.



BONDI | TOPOS

Beautiful to the touch: the ultra-matt surface

Two innovations from the new collection are used in this kitchen: BONDI in „carbon grey“ and the genuine wood front TOPOS in the new „textured oak abruzzo“. The unusual, fine-sandy-looking lacquer finish on the melamine resin coating of BONDI is a sensation both to the eye and the touch. The ultra-matt surface is hardened to make it resistant to fingerprints. Seamlessly lasered ABS edges make each front look all of a piece.

The kitchen shown has a clear structural division. Two dominating island blocks, three metres long, face each other in the middle of the room and provide an optical framework to the tall unit run integrated in the wall. The two function centres are exactly opposite each other in the middle of the islands. They are each integrated in a solid wooden block on top of the worktop. The change of material accentuates the areas „cooking“ and „washing up“; at the same time this change provides a connection to the tall units made of the same material and featuring a horizontal veneer. In the work area between the islands, the extra-wide pullouts are equipped with new minimalist bar handles. This visually underlines the length of the islands.

In the middle of the tall unit run, there are two wine fridges – a highlight for all wine lovers. Oven, washing machine and tumble dryer are concealed in units with slide-away doors, featuring vertical recessed handles. This means all kitchen functions are invisible when the doors are closed and the kitchen looks like a living area.



PROGRAMMES

Three top innovations in price groups 1 and 2, as well as the extension of our carcass range 73 KANTO now offer much more leeway for kitchens at attractive prices.



SIRIUS | -A | -C

Programme number 215 | 415 | 715, Price group 1

High gloss in the entry-level price sector is still very much order of the day — and we have just the thing in lacquer: SIRIUS, a programme with high-gloss lacquer on a melamine-coated MDF board. In a continuous hot-coating procedure, an undercoat is first applied, followed directly by the brilliant lacquer. The back remains in one colour, white, in melamine. The edges feature high-gloss ABS laser edges.

Front thickness 18 mm

Available colours:

BG 032 magnolia
BG 100 arctic
BG 103 merino

BG 120 frosty white
BG 130 mohair



IKONO | -A | -C

Programme number 221 | 421 | 721, Price group 1

The words icon (Greek for picture) and concrete were the inspiration for the name of this programme in modernistic concrete reproduction with an extremely authentic surface structure. Choose between a light and dark grey as an inexpensive alternative to the most popular colours from our real concrete programme CONCRETE.

Front thickness 19 mm

Available colours:

K 202 liton
K 204 carboton



BONDI | -A | -C

Programme number 239 | 439 | 739, Price group 2

Flat and finely sandy like a beach at low tide: that is just what the new super-matt surface of our BONDI looks like. The colour is provided by a melamine-coated MDF board with a super-matt, pleasantly non-slip matt lacquer finish. A special hardening protects the surface against fingerprints, ensuring the front always looks perfect even in dark colours. And thanks to the matt, seamlessly lasered ABS edge, it looks all of a piece.

Front thickness 19 mm
Accessory surround in K

Available colours:

VM 100 arctic
VM 103 merino
VM 120 frosty white

VM 130 mohair
VM 284 carbon grey

CARCASS RANGE 73 KANTO



Two classic frame programs from our main collection have now been added to the carcass range 73 KANTO. Ideal for planning traditional kitchens in connection with the lower 73 carcass and a slightly higher plinth.

At the same time, our accessory surround lines „country house“ and „city style“ will be available at a height of 73 cm.

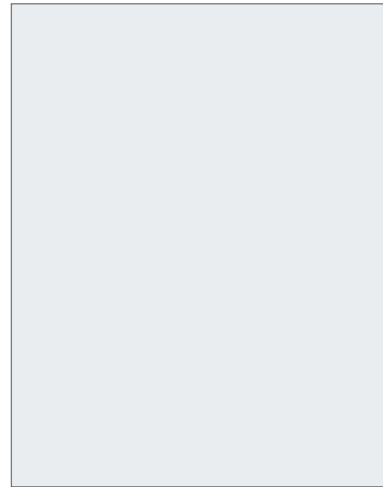
AVENIDA
Programme number 295, Price group 4



CARRÉ-FS
Programme number 561, Price group 4

NEW COLOURS AND DECORS

Although the world of furnishing is slightly more colourful nowadays, white and grey are still the main colours in kitchens. The extension of this basis — in both light and dark directions — offers a range of nuances for combining our colours and surfaces.



103 merino

A light, cool off-white that would go with virtually all colours, can be planned as an alternative to white tones if these seem too light and rich in contrast. Really appealing in combination with warm, grey wood finishes and the concrete-like surfaces of the programmes CONCRETE and IKONO.

Surfaces:

K, KG, BG, FS, FF, FG, LR, GL, GM 103 merino
H 403 ash merino, H 703 oak merino

Programmes:

SOLARA -A -C	FF- FS-PROG.	TAMOS COLOR -A -C
SIRIUS -A -C	ESPRIT -A -C	AVENIDA
CERES -A -C	IOS/IOS-M -C	
BONDI -A -C	TAO -C	

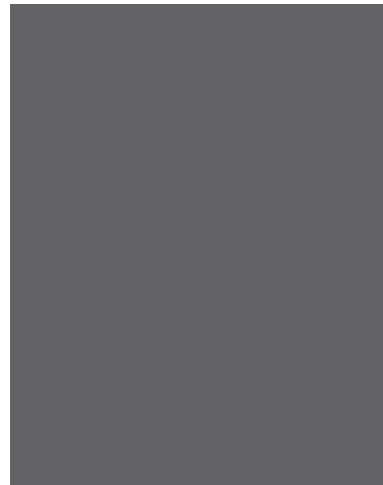


FB 188 dakar

A light, pleasant, genuine concrete colour with a typical trowelled structure changing from white to cream

Programmes:

CONCRETE | -A | -C



284 carbon grey

A dark anthracite which makes for fascinating fronts with its attractive, super-matt feel.

Surfaces:

VM 103 carbon grey
K 103 carbon grey (accessory surround only)

Programmes:

BONDI | -A | -C



oak abruzzo

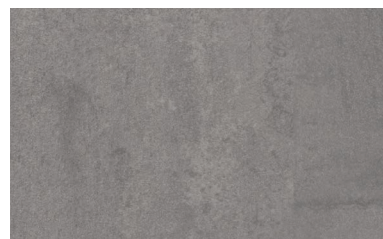
An oak tone that brings a touch of vintage with it.

Surfaces:

H 221h textured oak abruzzo
H 321v oak abruzzo rough
H 373v antique oak abruzzo

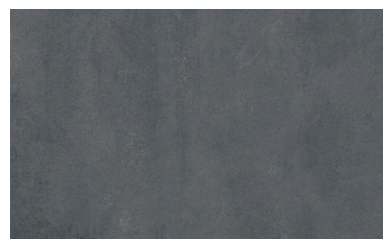
Programmes:

TOPOS | -A | -C
TAO-H | -C
TIMBER | -A | -C
XYLO | -A | -C



K 202v liton

Reproduction of a patinated exposed concrete wall in typical grey with an extremely attractive, authentic structure.



K 204v carboton

Very dark, concrete-like reproduction with extremely attractive, authentic structure.

Programmes:

IKONO | -A | -C

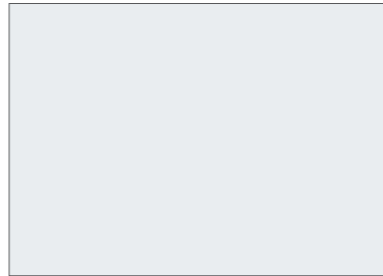
WORKTOPS

The fact that worktops are always available in the same colours as the fronts at LEICHT is a harmonious alternative for planners. For those who are looking for more contrasting colours, we have extended our range of fashionable decors.

LAMINATE

Laminate worktops in the designs KD and MGV are available in full planning depths in the 2016 collection:

AP KD
AP MGV



K 103 merino



KH 233 antique oak

Complements KH 233h antique oak
SYNTHIA | -A | -C



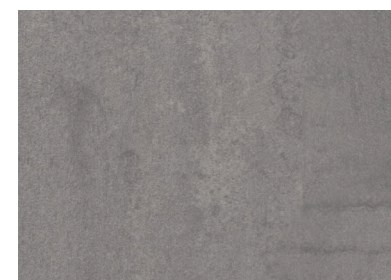
KH 091 mendocino



KH 483 cabana

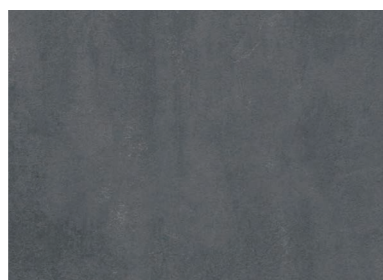


KH 485 lumber



K 202 liton

Complements K 202 liton
IKONO | -A | -C



K 204 carboton

Complements K 204 carboton
IKONO | -A | -C
Recommended with VM 284 carbon
grey BONDI | -A | -C



H 117 oak distinctive

SOLID WOOD

SINKS AND TAPS

The market for artificial stone sinks is growing as is the quality of the available stones. We are accommodating this trend with our own series, in minimalist form — typically LEICHT. We are also extending our range of articles from well-known sink and tap manufacturers.



Artificial stone sinks: GRANITEK

We offer a range of a total of five in-built sinks - reduced, angular and colour-coordinated with three of our main colours. The individual bowls of this series can also be installed built-under and glued into place.

There are three colours available:

683 khumbu	Recommended with 100 arctic
684 salinas	Recommended with 120 frosty white
685 sahel	Recommended with 130 mohair



FRANKE Tap Atlas Window

Sinks: FRANKE

The following FRANKE ranges are being launched/extended.

Sinks:	
Box	Stainless steel
Rapid	Stainless steel
Maris	For flush installations, Fragranit all colours

Taps:	
Atlas	Stainless steel
Ira	Chrome
650	Stainless steel/chrome



BLANCO Sink Dalago

Sinks: BLANCO

The following BLANCO ranges are being launched/extended.

Sinks:	
Lantos	Stainless steel
Dalago	Silgranit all colours

L3 PULLOUT AND DRAWER SYSTEM

The LEICHT carcass concept is designed to be timeless, objective and functional. This is also true of our new pullout and drawer system. It looks transparent and friendly, and is harmoniously coordinated with the interior carcass in terms of colour and material.



L3 design and technology

World premiere in the kitchen: our new interior frame system L3 exactly reflects the trend towards the clean, angular interior design of drawers and pullouts. It is the only system which combines the advantages of a double-walled frame – namely clean movement and high payload without dropping – with the invisible appearance of being under the surface. Because the generous glass sections of the pullouts nearly reach down to the floor and thus ensure clarity and a specific overview of what's inside. The usually high proportion of metal, on the other hand, has now given way to a slim-line appearance.

The clearly proportioned style is continued in the frames of the drawers and in the shallow hob drawers. All metal pieces are in a matt, timeless metallic grey which, in combination with the minimalist design and the transparent clear glass rails, looks extremely lightweight.

In addition, our guiderails have also been optimised: the closing mechanism of the independent close system is now much quieter and softer thanks to new cushioning.

Available from January 2016



L3 waste bin pullouts

With the new interior frames, we have also revised our waste bin and sink waste bin units. All waste bin pullouts now feature closed, high-walled frames which, together with the metal housing, keep everything in the dirty area between the bins on the base of the pullout hidden. Additional container sizes allow a varied and thus more efficient use of volume of the various carcass ranges. We have now also included a 35-litre bin for plastic waste in the range.

We have paid particular attention to the 50 cm and 60 cm standard sink waste bin unit: additional 2.5 litre bins can be flexibly positioned at the back. To minimise the collision area with fixed installation, we have done without a pullout back panel, but instead incorporated a full pullout guiderail which in turn allows better access to the bins.



L3 inner drawers and pullouts

For inner drawers and pullouts, we implement a straightforward, two-dimensional aluminium blender in the standard version. Like the interior frame, it is powder-coated in metallic grey. As we have had to date, we also have an alternative available for a surcharge: a new version in glass in a new colour.

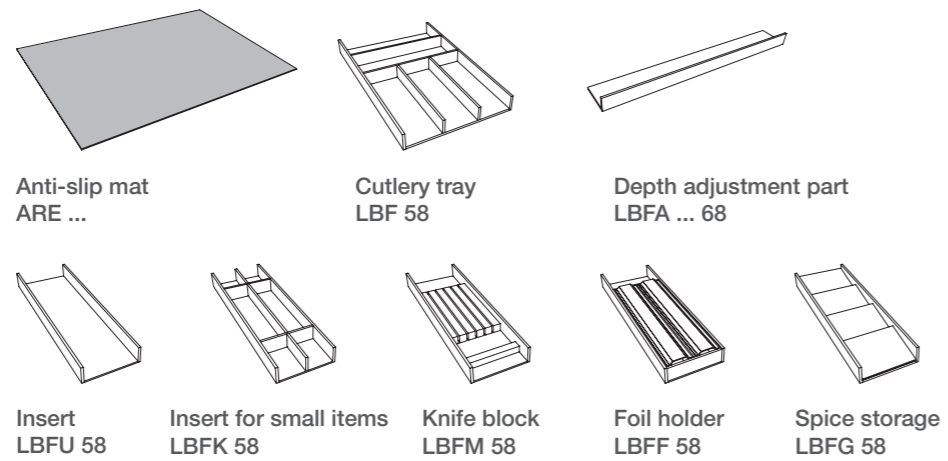
L-BOX

The market launch of the L3 interior frame has also led us to adjust parts of our interior features. One new feature is our L-Box in solid oak, a top-quality system for making drawer sections which is favourably priced because of its sectional nature.

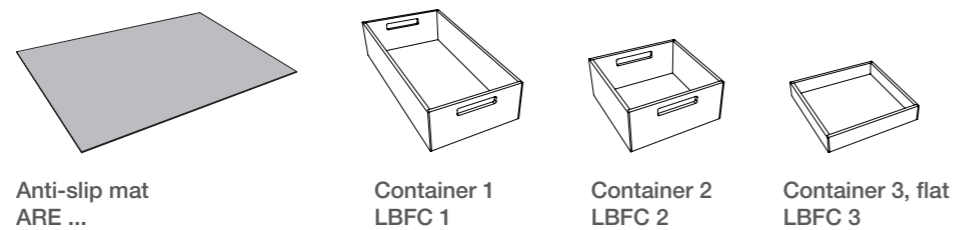


L-Box is a new division system in naturally lacquered oak for the sectional organisation of drawers and pullouts. The L-Box elements are arranged with a gap on a foam-rubber-like anti-slip mat resulting in a vital play of materials and colours between the wooden surface and the neutral grey of the slightly textured mat. The number of components is reduced to the essential functions of kitchen equipment and thus favourably priced.

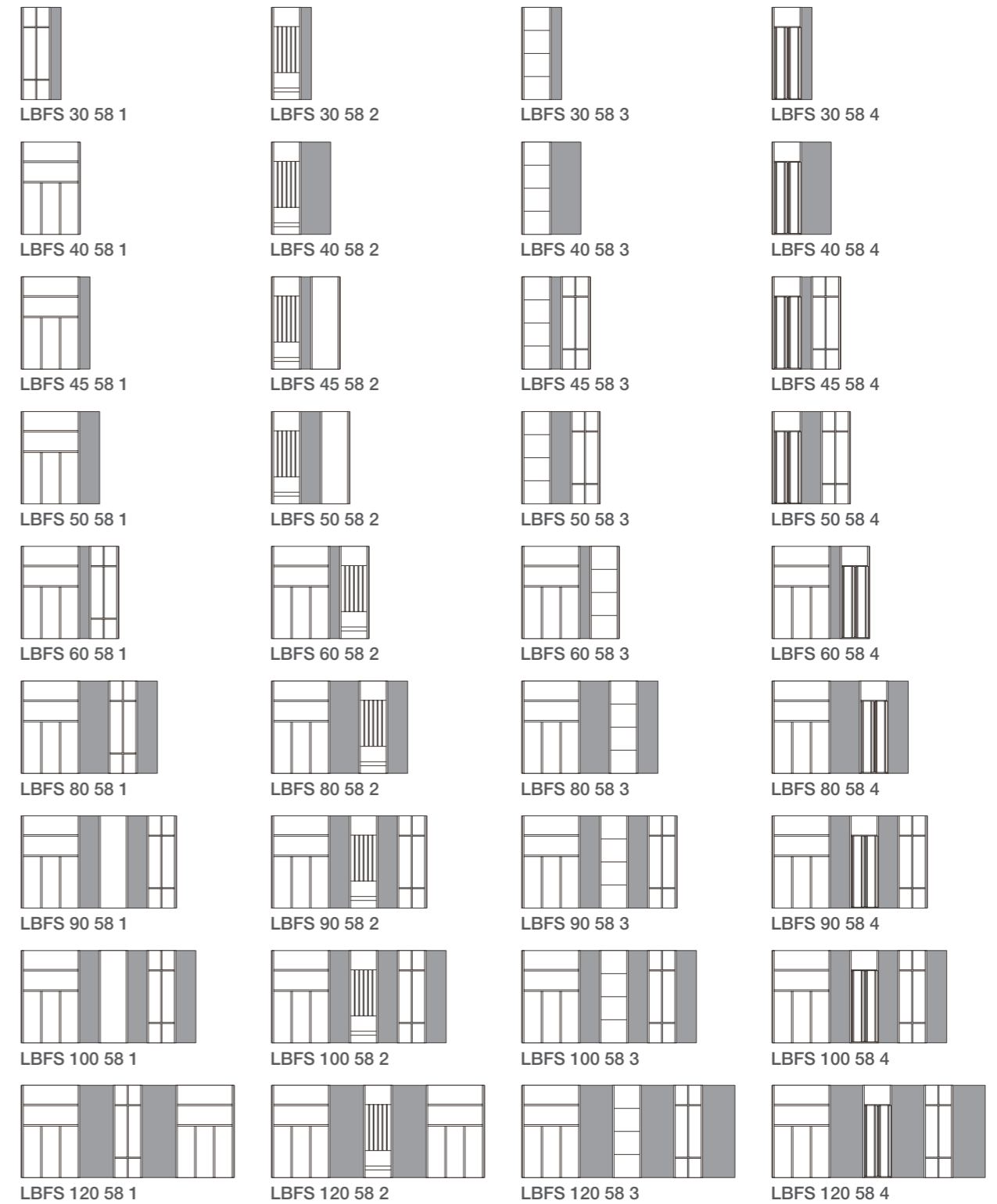
Elements for drawers:



Available elements for pullouts:

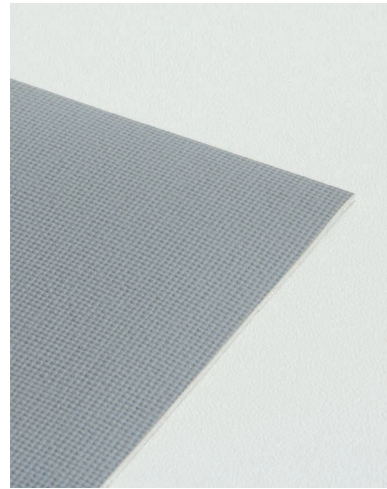


To make ordering easier, we offer four different sets, preconfigured according to functions, for every drawer width:



INTERIOR STYLE

We have also adapted standard articles, such as the anti-slip mat and plastic cutlery trays, to the new L3 pullout system.



Anti-slip mat

Our foam-rubber-like anti-slip mat with a delicate, easy-care fabric structure that is pleasant to the touch is also new. It sticks outstandingly to the base of the drawer and ensures pleasant cushioning.

The anti-slip mat has been colour-coordinated with the L3 interior frame and is thus a harmonious addition to the system.

Order types: ARE ...



Plastic cutlery tray

A new plastic cutlery tray in all widths from 30 cm - 120 cm completes the range of interior features, naturally in keeping with the new L3 interior frame in terms of colour and style. Also available for shallow hob drawers in widths 60 cm - 120 cm.

Order types: BFK ...



Q-Box/Q-Vario

As an addition to our top-quality Q-Box/Q-Vario series we have introduced a container for small packets etc.. The aesthetically appealing construction of the container with metal runners was taken from the Interior+-series.

It comes in two sizes which are perfectly coordinated with the standard pullout depths.

Order types: EB 14 23 C
EB 19 23 C

UNITS

Further pullout units for carcass range 73 and detailed floor unit types which facilitate the increasing planning of downdraught ventilators in order processing, are just two of the many innovations of our kitchen furnishing program.

Units for carcass range 73

We are adding further unit types to our 73 range in the standard series and as CONTINO:

Floor units

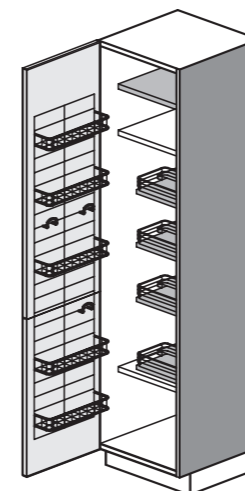
T ... 73 Z2X	Pullout unit; split - 40 cm at the bottom, 27 cm at the top
TSP ... 73 Z2WX	Sink waste bin unit; split as above
CTSP ... 73 BZW	CONTINO sink waste bin unit, fixed blender at top
T ... 73 IS2IZ	Door unit with 2 inner drawers and one inner pullout

Tall units

CH 90 ... IZ4	Storage unit
---------------	--------------

Relaunch of the 190 cm tall units

As lower heights are required in tall units, for example to stack further top cupboards, we are reintroducing tall units measuring 190 cm. The front split is adapted to the 80 cm carcass range.



Storage centre 60 cm

To date, the storage centre was not available at a width of 60 cm and the planning of identical widths in tall unit runs thus not possible. We are now closing this gap for all tall unit heights from 190 cm.

Order types: H 60 ... VC

REAR PANELS WITH A MOTIF

Artistic, large-format images are value added for a kitchen, both decoratively and emotionally



Glass rear panels with a motif

For decorative plans, we have put together a collection of six graphic motifs for printing on glass rear niche panels. The images come on a clear glass plate, 4 mm thick. This can either be ordered loose or on a carrier plate (1.6 cm thick). To create a special atmosphere, the prints are also available with LED backlighting (2 cm thick). The light is powered on/off and dimmed via an integrated touch sensor. Light is cast evenly over the entire surface, thus giving an atmospheric background to the image.

Maximum dimensions (L x W) 250 cm x 70 cm; the dimensions can be ordered individually. Familiar processing, but not possible with backlit rear panels with a motif.

The following motifs are available:

612 Grassland



613 Poppy Blossom



614 In the Woods



615 Cloudy Mosaic



616 Mikado



617 Urban Dawn



ACCESSORY SURROUND

For a harmonious kitchen setup you need an attractive accessory surround. For this purpose, we are now offering you new attractive and, in planning terms, sophisticated design elements for the niche area and for CONTINO unit runs

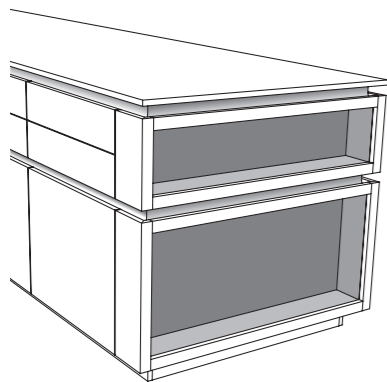


Niche shelving

New, modular extended shelving, 1.6 cm thick, for planning flexible and open storage space areas on the worktop or in the niche.

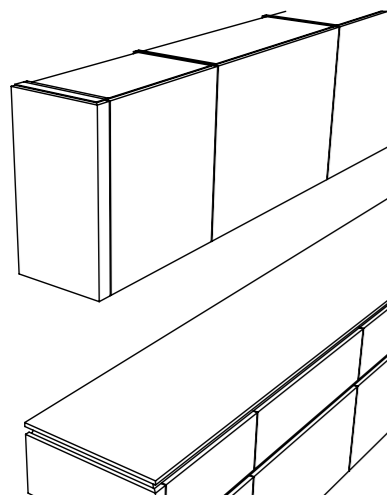
The extended niche shelving is made of three glued shelf units — empty, with shelf in the middle, with a centre panel in the middle — and assembled shelves and rear panels in between. The positions of all centre panels and shelves can be altered to suit customer requirements free of charge. For a surcharge, back panels are also available in a different surface design.

For a decorative arrangement of jars and utensils, there is a 9-section divider made of criss-crossed aluminium.



CONTINO open side panel

As a concluding planning option for CONTINO unit runs, we have developed a 15-cm panel, the end face of which is designed as open shelving. The interior can be made to contrast and, if desired, equipped with light. When facing the living area, the panel becomes a decorative feature, but can also be used functionally in the cooking and sink area.



W6 panel for wall units

We offer a W6 panel in the same design as the front for concluding wall unit runs in kitchen plans featuring AVANCE and CONTINO. This means that wall unit runs now correspond in appearance to W6 panels on floor unit runs and islands.

DYNAMIC WHITE

It is standard today that architecture adapts light to suit users' requirements. With the new light regulation technology of our lamps, LEICHT kitchens can now appear in atmospheric light ranging between candlelight and winter sun.



LED linear lamps

In line with technical progress, we are adapting our linear lamps BLE, NLE, GLE, Ambience and Xtend/Xtend+ from individual LED chips to more efficient LED strips. The angle of radiation has also been optimised. Overall, this means more light and fewer shadows on the worktop.

A completely new function is the integrated, dynamic white light control which permits settings via remote control between warm light 2700°K and daylight 6400°K and also enables dimming (note: Ambience and Xtend/Xtend+ can only be dimmed). All lighting can still be operated in a constant neutral white 4000°K.

Selecting dynamic or constant white light is simply determined with the choice of the basic power supply set.

Energy efficiency class A+



LER lamp

The LER lamp now also has an LED board for integrated white light control from warm light 2700° K to daylight 6400° K which can also be operated in a constant neutral white 4000°K.

Selecting dynamic or constant white light is simply determined with the choice of the basic power supply set.

Energy efficiency class A+



LED griprail profile lights

We have introduced a new griprail profile light, particularly for CONTINO wall units. The profile is identical to handle number 881.000 in terms where it is held; LED lighting is integrated behind it. There are two versions available:

LPO 30 - 120 (illumination down)
LPOG 45 - 120 (illumination down and up, only for glass wall units)

All griprail profile lights are designed for the new, dynamic white light control which permits continuous settings via remote control between warm light 2700°K and daylight 6400°K, and also enables dimming. Alternatively, the lighting can also be operated constantly with neutral white 4000°K. Configuration takes place via the relevant basic power supply set.

The LED griprail profile lights are also available for wall units on the main list.

Energy efficiency class A+

LIGHTING AND ACCESSORIES



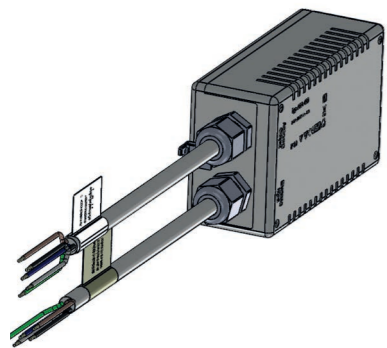
Interior pullout lighting for AVANCE / CONTINO

For lighting drawers and pullouts from a width of 45 cm of our handle-less ranges, we are offering a new, extremely streamlined and bright LED light with an invisibly integrated movement sensor. No further processing, such as gluing a reflector label on the front, necessary.

Order types: ZBI 45 -120

Luminous colour 4000°K

Energy efficiency class A - A++



Safety-Box 380 V

New Safety-Box with extended connected wattage. Either three devices of 3.68 KW can be connected or one device with 400 V alternating current and a maximum rated input of 6 KW. The previous Safety-Box SBOX 230 P3 is thus replaced.

Connection on site by authorised specialist.

Order type: SBOX 400

HANDLES

There's a whole world of handles, but it is the details that make a handle what it is supposed to be: a hand flatterer in daily use with a pleasant surface that is an attractive and harmonious addition to the overall appearance of a LEICHT kitchen.



Knob 154.306

Rustic in 306 steel.
Recommendation for frame programmes and TAO | TAO-H.



Bow handle 556.306 und 556.405

Vintage design in 306 steel, recommendation for IKONO, CONCRETE, TOPOS. Or can be planned universally in modern 405 stainless steel.



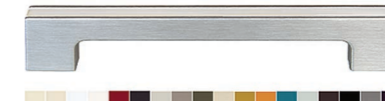
Bow handle 560.405

Profile with contour pleasant to hold. Recommendation for smooth programmes, e.g. SIRIUS.



Bow handle 567.405

Handle (surcharge) with knurled bar in stainless steel.
For minimalist design kitchens with a love of detail.



Bow handle 394.103 merino
394.284 carbongrau

Additional colours of the handle (surcharge) with lacquered inlay. Recommendation for all single-colour programmes, e.g. BONDI.



Bar handle 640.405

A streamlined and attractive bar handle with a stainless steel surface. The generous space and the ergonomically rounded handle areas make it a distinctive and functional design element on the front.

Arrangement D, horizontal. The lengths are coordinated with all LEICHT front widths.

IMPRINT

PUBLISHER

LEICHT Küchen AG
Postfach 60
73548 Waldstetten
Germany
Phone +49 | 7171 | 402-0
Fax +49 | 7171 | 402-300
www.leicht.com

LEICHT Küchen AG
Postfach 60
73548 Waldstetten
Germany
Phone +49 | 7171 | 402-0
Fax +49 | 7171 | 402-300
www.leicht.com